



Lincs South Federation News

November 2020

Issue 75

Hello

Last weekend Chris Jordan, federation treasurer, and I attended our first National Council meeting – virtually of course! All 69 federations were represented with the NFWI board of trustees and all departments of the national organisation too. Whilst it was as far removed from the normal format as it is possible to be, I have to admit to enjoying it. We were able to make comments in the ‘chat’ pane as the meeting progressed and to ask questions as we went along. There were slides to promote many of the items that were presented, and we voted many times. We were even divided into ‘break out rooms’ to discuss things in small groups. So, apart from Zoom fatigue, an interesting couple of days!

There’s a lot to read in this newsletter. Do take note of the two flyers too – the opportunity to become an Adviser and our up-coming Federation Quiz.

Best wishes

Liz McIntosh **Liz**

LSFWI Chairman

lmcintoshwi@gmail.com

07969360344



Name our new room!

At the beginning of this month we moved into our new offices at Pattinson House. Whilst we have only moved along the corridor, we feel that the change will be of benefit to us all.

We now have one larger room that will be used to hold any meetings and, when guidelines permit, to hold workshops and training sessions.

The room is a good size and is light and airy. We feel that it is worthy of a name and would welcome any suggestions that you may have. Carole and Tracey are now fully operational in their new office and whilst it is smaller, it seems to be fulfilling its purpose.

Please send your suggestions to:

fedoffice@lsfwi.org.uk

Zoom



If you are thinking of upgrading to an annual Zoom licence this is the discount code:

ZOOMCARES



facebook.com/lincssouthwi



@lincssouthwi



lincs_south_wi

TAKE A CHANCE

October winners:

- Jules Knight Deeping St James WI
- Sandra Saxby– Gosberton WI
- Margaret Wild – Rippingale & District WI



Love
DENMAN



“Denman at Home”

November offers 50 online classes including:

Bake Along with Alison

Mistresses and their Houses

Freehand Embroidery

Christmas Wreath

Japanese style broth with noodles

Courses are from 1 hour in length and cost from £5

Check out the availability at:

<https://www.denman.org.uk/whatson/?search=Online%20Course>

NFWI NEWS

Latest news items on MyWI:

As we look to the future with the launch of our new strategic vision, it is crucial that we first build a clear picture of the WI membership today. To ensure that we have an Inclusive, Flexible, Bold & Inspiring, and Growing & Relevant future, we believe that this information is essential to help us better understand our membership. The information collected will remain completely anonymous, but it will greatly assist the NFWI with membership projects, policies and procedures and ensure that everything they do is developed with you in mind. So please tell them about yourself and be included.

If possible, please complete the survey online. If not, there is a paper copy in the October edition of WI Life.

<https://www.thewi.org.uk/countmein>

NFWI 2021 Diary

If you pre-ordered a diary you may now collect it from the office. Alternatively, it can be posted. Please contact the office for postage costs. The cost is £5.10 for each diary.

We have a limited supply of spare diaries. If you would like one, please contact the office: fedoffice@lsfwi.org.uk

The office is open Monday and Tuesday between 9.30am and 2pm

Lincoln Cathedral Connected

**Join us for a Zoom talk by Fern Dawson,
Curator of the Lincoln Cathedral Connected Project.
Thursday 3 December at 2pm**

Email for an invitation to attend: fedoffice@lsfwi.org.uk

Lincoln Cathedral Connected is a high profile, multi-million-pound transformational project which will bring economic and social benefits to the Cathedral, as well as the city of Lincoln.

The Connected project is a scheme to radically improve the Cathedral's setting and visitor experience – offering more engaging and dynamic spaces for a wider number of visitors to enjoy.

The pleasure of your company is requested

Witham on the Hill WI

Is hosting a Zoom meeting:

On Tuesday 3rd November at 7.30pm

***Robert Miles from Rutland Agricultural Society will be giving a talk about
Oil Seed Rape.***

If you are interested and would like to join the meeting please email
elaine.brock@hotmail.co.uk for an invitation.

Carlby WI

Tuesday 10th November @ 7.30pm.

Speaker is ***David Palmer, local auctioneer with 'Ramblings from the Rostrum'***.
We have asked David to join in around 7.45pm and his talk will last about 30 mins, then open
for questions:
Topic: WI members' meeting

Join Zoom Meeting

<https://us02web.zoom.us/j/84792346333?pwd=MHdxTTUvUi9mbkVGVjFmU3JwVFhGUT09>

It will show as Carlby Parish Council.

Meeting ID: 847 9234 6333

Passcode: 171632

Archive Corner

Owing to limited space at Lincolnshire Archives the following items can no longer be received:

- Textiles
- Scrapbooks
- Programmes
- Competition trophies
- Records less than 35 years old
- Photographs

Lincolnshire Archives will, however, continue to hold WI records of meetings up to 35 years prior to suspension.

So, with effect from 2021 I should be grateful if WIs could consider recording monthly meetings digitally. Then, if they do have to close in the future, meeting records can be sent to the Sleaford WI Office for electronic archiving.

If you have memorabilia that you are not able to store please contact your local museum or Heritage Centre.

For ease of reference, the addresses and contact details I have been able to find for Museums in the Lincolnshire South area are as follows:

Grantham Museum, St Peters Hill, Grantham NG31 6PY - [01476 568783](tel:01476568783)

Sleaford Museum, 81 Southgate, Sleaford, NG34 7RQ - [07518 972016](tel:07518972016)

Spalding Museum, Ayscoughfee Hall Museum, Churchgate, Spalding, PE11 2RA - [01775 764555](tel:01775764555)

Boston Museum, Boston Guildhall, South Street, Boston PE21 6HT - [01205 365954](tel:01205365954)

Bourne Museum, 17 South Street, Bourne, PE10 9GN

Stamford Museum, Broad Street, Stamford, PE9 1PJ - [01780 766317](tel:01780766317)

On a final note, the office is running out of available storage space so will only be able to hold WI Records of Meetings and will not in future be accepting Financial records except the final accounts before the WI is closed. I therefore urge WIs to incinerate old cheque book stubs, receipt books, and anything else containing members' names and addresses that is over seven years old.

If you are interested in archiving and would like to join the federation archive team please contact the office on: fedoffice@lsfwi.org.uk to discuss further.

Chris Jordan, Federation Archivist

CHAIR'S CHALLENGE

Don't forget to start compiling your WI entry for this competition. The closing date is 31 January 2021 and the entry fee is £10.

Your programme can be as realistic or creative as you wish! It can be in a digital format or a hard copy. The decision is yours.....

Send your entry to Federation Office: fedoffice@lsfwi.org.uk

DIGITAL DIGEST.....

Did you know that you can access both E books and E-audio books via the Lincolnshire Libraries site:

https://capitadiscovery.co.uk/lincolnshire/assets/-/pages/ebooks_eaudio.html

I have tried the E-audio books viz the RB Digital app and found that it works well



Virtual Walking Netball

will continue with two sessions a week on:

Monday evenings at 7:30 pm – 8:30 pm

&

Thursday mornings at 10:30 am - 11:30 am

As always, if you are interested in joining the session, simply register your interest with Nicole via WInetball@englandnetball.co.uk

**Connect
to support
Lincolnshire**

Connect to Support Lincolnshire is an online information and advice library, community directory and marketplace for adults in Lincolnshire.

This website is intended for adults who want to find out about local groups, activities and services within the community.

<https://lincolnshire.connecttosupport.org/>

WATCH THIS SPACE!!

The Federation team will be offering a **Get to Grips with Zoom** session shortly. One to one telephone support will also be available.

Lynn Bowry of Metheringham WI has been in touch about the **UWI Pen Pal Scheme** mentioned in the April newsletter. She joined and asked for a pen pal and It's been such a good experience she now has **THREE**. Two are WI members from the UK and the third one is a retired teacher of English who lives in Alabama in the USA. Lynn describes it as being "a positive way to connect with likeminded ladies and sitting down to read or write a newsy letter has made a change from gardening and all the other things we are doing to keep busy". Thanks for the positive feedback Lynn!

Gosberton WI



The majority of our members aren't that tech savvy so we decided to deliver something to each of them every month. The committee members have taken it in turns to create a Meeting in a Bag. This month it included a cooking apple, an onion and some home-grown tomatoes. The brief was for members to make what they like and to take a photo to pass on if possible. Below shows how creative members can be; onion bread, tomato soup and an apple pie!

We also had chutneys and other soups made.

Other months we've had a small collection of craft items to use or bulbs to plant for a Christmas display.

Members are happy to take it in turns to create quizzes to include in the bag too!

Rosemary Sneath, Trustee, Gosberton WI

Hellos and Goodbyes

We were sorry to learn this month that **Debbie Venn**, former Federation Chairman, has decided to step down from the Board of Trustees with immediate effect. Debbie has been an invaluable source of support to the Board for many years and she will be missed by all of us.

We have the pleasure of welcoming **Sue Sang**, a member of Grantham Early Birds WI, to the Board as a co-opted member.

LADY DENMAN CUP

Our three successful entries, from Barbara Miller – Ruskington WI, Janis Tunaley – Wellingore WI and Jass Wells – Caythorpe & District WI, have been forwarded to NFWI for the final round of judging.

All entries were judged by Chrissie Hall a creative writing tutor and author. Chrissie commented that all the entries submitted were very good but that these three 'shone'.

Wellingore WI

At the start of the pandemic, I did quite a lot of research on the best type of face mask to make. Initially I made them for family and friends. But I didn't stop there. I refined the design and offered the masks locally, asking for a donation of £5 each, with all proceeds going to St. Chad's Church in Welbourn as all their usual fundraising events were curtailed. I am astonished and delighted that so far, I have raised over £2,300 and I would like to say a very big thank you to everyone who has supported this fund raising effort by getting their face masks from me. The masks are triple layered, the



middle layer being a bonded fabric which acts as a filter, and they have an encased wire which fits over the nose, keeping them in place so they are both comfortable and secure. They are also hand washable so environmentally friendly. I have used dozens of fabrics so lots of designs to choose from as the photos show, and I have just started making some for Christmas as I felt it would be nice to have some festive ones to spread a bit of brightness in these gloomy times. A lot of people have also said that because the masks fit over the nose properly, they don't steam up their glasses. It's not something I can guarantee but it's nice to know that it helps. I

have got dozens of masks made up and ready, and I'm getting different fabrics all the time. I am also able to take payment direct to St Chad's bank account and post masks out, if required.

If you would like to contact me email masksstchads@icloud.com

Thank you, Brenda

With much sadness Wellingore WI also announces the death of long standing member, Liz Hail.

Liz was a regular visitor to Wellingore WI having first been President in 1954. Liz celebrated many milestone birthdays with her friends at Wellingore WI, including her 100th birthday as seen in this photo.

Liz reached the incredible age of 106!



Note to secretaries:

The 2021 Membership Booklet and Membership Card will be delivered before Christmas. Whilst distribution of these will be a challenge in view of the lack of meetings, please try and circulate these as soon as possible.

Spare copies will be available at the Fed office: fedoffice@lsfwi.org.uk

Don't miss a copy of the Federation News

If you would like a copy of all subsequent newsletters straight to your inbox, please email the office with your details. Please include the name of your WI.

Send to: info@lsfwi.org.uk

If you need back copies of the Federation news these are available on our NFWI website page: <https://lincolnshire-south.thewi.org.uk/federation-newsletters>

Don't Ditch the Pumpkin after Halloween!!

A whopping 18,000 tonnes of pumpkin gets thrown away in the UK after Halloween each year. There are several things you can do – if your pumpkin is fresh why not try this tasty soup recipe below. If, however yours is looking the worse for wear why not feed the creatures in your garden. There are plenty of ideas at:

<https://www.woodlandtrust.org.uk/blog/2019/10/what-to-do-with-pumpkins/>

2 tbsp olive oil

2 onions, finely chopped

1kg pumpkin or squash peeled, deseeded and chopped into chunks

700ml vegetable stock or chicken stock

150ml milk or double cream or vegan alternative

For the croutons:

2 tbsp olive oil

4 slices wholemeal seeded bread, crusts removed cut into small squares.

Heat 2 tbsp olive oil in a large saucepan, then gently cook onions for 5 mins, until soft but not coloured. Add 1kg pumpkin or squash, to the pan, then carry on cooking for 8-10 mins, stirring occasionally until it starts to soften and turn golden. Pour stock into the pan and season with salt and pepper. Bring to the boil, then simmer for 10 mins until the squash is very soft. Pour milk or cream into the pan, bring back to the boil, then purée with a hand blender.

To make the croutons: fry bread in the oil until crisp. Add handful of pumpkin seeds and fry until toasted. Add to soup bowls.



WYBERTON CHURCH END WI

Wyberton Church End W.I. celebrated their 80th birthday celebration at the beginning of September by holding two afternoon teas. As we have 51 members, we were unable to have it all together nor were we able to hold it in our own hall as we would not have been able to socially distance.

We hired a large hall which was Covid secure and had the first afternoon tea on Thursday 3rd September when 28 members attended and the second on Friday 4th, when 22 members came.

We started off by the Secretary reading the minutes from the very first WI, meeting which was held in September 1940 and were then entertained by Pat Campbell who sang songs from the '40s to the present day.

After that we all had a wonderful tea provided by a local bakery. Each member was given their own beautifully presented box which contained sandwiches, crisps, sausage rolls, scotch eggs, strawberries and cream, scones and cake! It was delicious. Lots were taken home to be finished off later!

We had a celebratory cake each day: the first one was cut by Doris Rodwell, our longest serving member (pictured) and the second by Pat Master, one of our newest. The cakes were decorated by one of our own members.



Doreen Nundy, President

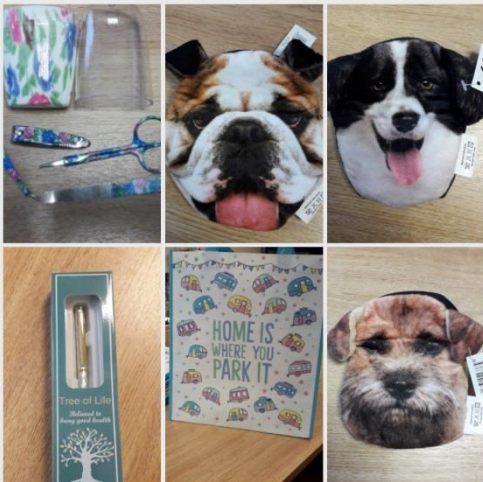
SALES SHOP

We have a number of items remaining from our sales tables. These would make ideal stocking fillers, raffle prizes or goody bag gifts for members. They include novelty purses, pens, bags, manicure sets and lots more. Prices from £1

A full flyer is attached.

Stocking Fillers Christmas Special Offer

WI Logo Pen and Post It Note Pad - £1.25



Here is a small selection:



Please contact

Rosemary in the first instance if you are interested in purchasing any items:

Tel: 01775 640573

Email – the_paddocks@hotmail.com

MEMBERS ADVISORY COMMITTEE

NOVEMBER = MCS MONTH

It is very important to ensure that all details on the MCS are up to date and entered correctly, as incorrect entries will result in members missing out on many of the benefits of being a full WI member.

- **Our current Federation MCS shows that we have at least 200 more members than those whose subscriptions we have received! If you have not submitted your subscription for 2020, please give this your urgent attention.**
- An accurate membership record prevents unwanted WI Life copies being sent to those who
- are no longer WI members. This is a costly waste of resources.
- Access to My WI – the dedicated members' only website is linked through the MCS
- to ensure that the site is only accessible to members. If a member wishes to take
- advantage of My WI she will require a valid and current email address entered on the
- MCS record.
- It is also a good idea to review email addresses periodically as they can change.
- More information on My WI can be found at: <https://mywi.thewi.org.uk>
- Access to WI Training (formerly the WI Moodle) also requires a valid email address in the MCS.
- If you do not have an MCS representative, please send any amendments required to: fedoffice@lsfwi.org.uk

SPEAKERS' CORNER

As with much of our life Speakers' Corner this year will take place virtually.

Wednesday 18 November at 2pm

Thursday 19 November at 7.30pm

- There will be a mix of 'live' speakers plus a couple of pre-recorded films
- Each speaker has five minutes to promote their talk which can be delivered by Zoom or, when restrictions permit, in person
- Details of cost, contact info and length of talk will be available
- Please email the office to book your place and receive an invitation

fedoffice@lsfwi.org.uk

Jane Root, MAC Chair

Is it too early to mention Christmas.....????

LIVING ADVENT CALENDAR

Set aside the chocolate and take your Advent calendar experience to the next level with a Living Advent Calendar: unveil a new window display every night in Advent for some festive community cheer. Our friends at **Foston WI** introduced us to this great idea found at:



<https://www.edenprojectcommunities.com/stuff-to-do/organise-a-living-advent-calendar>

The nice thing about this project is that it doesn't take too much organising after the initial set up. The scheme can be extended to other community groups and would be good to involve families with children. With each house taking on the challenge of creating a festive window display on an allocated December date, you'll all get great enjoyment at seeing what fun concepts people come up with.

REVERSE ADVENT CALENDAR

If you are looking for a new Christmas tradition, why not try a Reverse Advent Calendar? This works by popping an item of food, a household product, feminine hygiene item or a treat into a bag/box that can then be taken to a food bank or charity in order to help those less fortunate, that are struggling at Christmas time.

Why not start with a bag for life on December 1st and place one item in the bag up until Christmas. Nappies, toiletries, feminine hygiene products are always in short supply at Food Banks. Food Banks in our area can be found in Lincoln, Newark, Grantham, Market Deeping, Bourne, Boston, Spalding, Stamford and Sleaford.

Why not make this your WI's Christmas project??

Looking for Inspiration?

Whilst some WIs have taken to Zoom and virtual meetings like the proverbial ducks to water, there will be as many who find the idea of talking via a screen a step too far.

Why not think about what alternatives you may be able to enjoy?

- ☺ Take it in turns with other members to keep a record of what is happening in your community. This could form a part of your WI record.
- ☺ Arrange a simple scavenger hunt in your area to be completed in pairs. Enjoy some socially distanced walks setting off at staggered times, or a variety of routes.
- ☺ Arrange and deliver goody bags or meeting in a bag.

Shelagh's Bird News

At the beginning of October Lincolnshire had an unusual visitor! Only the second one to ever visit the UK. And we were very intrigued to see it, so a quick jaunt on an early Thursday autumn morning to a field in the middle of nowhere (or so it seemed!) to investigate. But no, it was only between Crowland and Moulton where we joined a gathering of bird watchers to see this rarity in the middle of a ploughed field with a flock of rooks & jackdaws. It had travelled from the French Alps, disregarding the quarantine rule, absconding from its parents who live as part of a long running reintroduction of this endangered species to seek pastures new!

What is it? You'll want to know!

Its correct name is Lammergeier but more commonly known as a Bearded Vulture and dubbed "Vigo". It is estimated that it hatched in the early spring of 2019. The name Bearded Vulture is given from a distinctive tuft of feathers under their lower beak which you can see on the photograph of it sitting in a tree.

After arriving in the UK it made its way to Derbyshire where it resided in the Peak District National Park for about three months, feeding on dead sheep, rabbits, hares and any other dead animals that it found. It is known as the bone crunching vulture. Then, two weeks ago, it showed up in Norfolk before landing here in Lincolnshire. We were very fortunate to see it on both the Thursday and Friday.



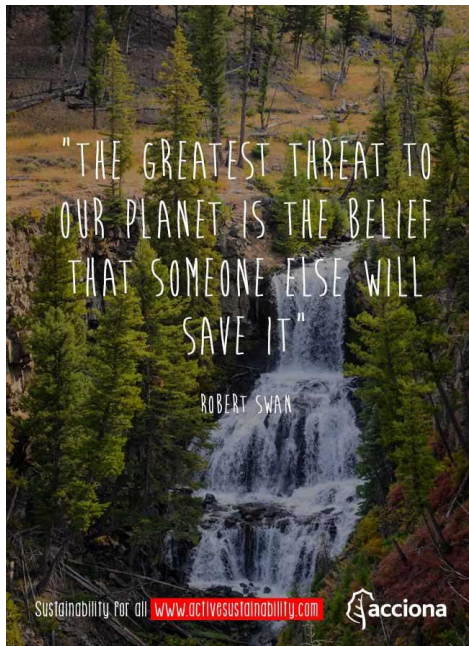
It is one of the world's largest and probably rarest birds of prey with a wingspan of 2.5metres plus. Despite its enormous size, the bird is not dangerous to people or farm animals.

Where will it go next? Nobody knows, but to cross the English Channel is potentially a hazardous journey and it would need to find enough food to continue its journey back to the Alps, whilst also avoiding numerous threats in lowland areas, including collisions with power lines!

STOP PRESS: It has made it! Next stop from Lincolnshire was the RSPB HQ in Sandy, Bedfordshire and then on to Beachy Head where it waited until the winds were right for it to cross the English Channe. It is now on its way home through France. We wish it safe passage!

Shelagh Coates, Trustee, Deeping St James WI

Climate Ambassadors - what we need to do now.....



Be a responsible consumer:

- ❖ Reducing consumption
- ❖ Being more active
- ❖ Consuming local products and contracting local services, as well as second-hand products
- ❖ Keeping and investing their money in an ethical bank
- ❖ Reusing, repairing and recycling.

Investigate the following resources:

- Sir David Attenborough's film: A Life on Our Planet –Netflix – probably the most important documentary of the year; I found it so moving, shocking but ultimately hopeful
- Prince William's Earthshot Prize - Youtube
- Prince William – A Planet for Us All – ITV (catchup)
- Organisations to support or follow on Instagram/Facebook/ Twitter – WWF, Greenpeace, Extinction Rebellion, Sea Shepherd Conservation, Climate Coalition, Active Sustainability, Big Climate Fightback and many more

Count the number of plastic containers in your bathroom and commit to reducing it by 50%.

Replace plastic containers with refillable glass bottles. Many retailers (M&S included) now offer recyclable pouches as refills, saving 80% of the equivalent plastic.

Consider making your own products – try recipes from Nancy Birtwhistle or Peace with the Wild – websites/ Instagram/Facebook. Both have easy to follow green recipes – and both in Lincolnshire!

1. **A Life on Our Planet** - This is Sir David Attenborough's companion book to the recent film, reflecting on his work and the dramatic changes to Nature that he has witnessed. It is sobering but ultimately hopeful.
2. **English Pastoral** - James Rebanks farms in a beautiful valley in the Lake District. This is a history of his family and farm, the land and Nature and changes he has witnessed over three generations. See also "A Shepherd's Life".

3. **Our Only Home** – The 14th Dalai Lama, spiritual leader and Nobel Prize winner, writes an inspiring appeal for us to combat climate change on Earth, our only home.
4. **Food and Climate Change** - Author Sarah Bridle gives us the Carbon footprint of the foods that we eat and shows us how to combat climate change by adapting our diet.
5. **Native** – Life on a remote hill farm in Galloway, Scotland is the backdrop for this poignant book, which explores our human connection to nature. Patrick Laurie explores the links between his farm, cattle and birds and Galloway's modern foresting schemes.
6. **The Part-Time Vegetarian's Year** - With Sir David Attenborough, amongst many, urging us to eat mainly plant-based diets, this book is timely. All of the recipes are vegetarian, but most feature a Part-Time Variation, showing you how to include an element of meat or fish, or to make it fully vegan. This is the perfect book to support your food journey.

Wendy Wooldridge Climate Ambassador, Witham on the Hill WI

The Federation WI Adviser Team Needs You!



Have you ever wondered what the work of a WI Adviser is?

Do you see your WI Adviser at work during Federation events and WI meetings and wondered about becoming a WI Adviser yourself?

Why not come along to one or two of our meetings and find out more - we hold these on alternate months via Zoom or at WI Office in Sleaford. It would be great to meet you and give you an insight into this wonderful and rewarding role.

Interested? Contact Jane Root in the first instance via:
janerootwi@btinternet.com or fedoffice@lsfwi.org.uk